

Need to Recreate a Part?

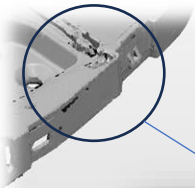
DTI can help you reproduce damaged or discontinued components using advanced reverse engineering technology.

Reverse Engineering & 3D Scanning Solution

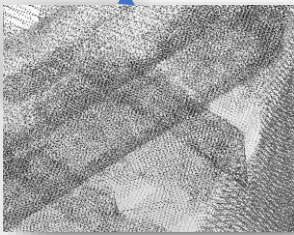
We provide affordable 3D laser scanning solutions that offer fast and accurate non-contact measurements on complex parts.

Machine Specification

- **Blue Laser and NIR Scanning Technology** – Accurate scanning for complex metal surfaces
- **High-speed Scanning** - up to 660.000 points/sec
- **Wide object range** – from 5 mm to 4000 mm
- **Full color scanning** (24-bit)
- **High accuracy** – Up to 0.02 mm precision



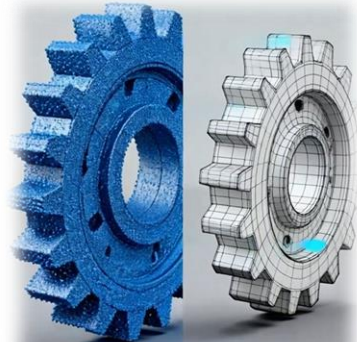
➔ Raw data



We also provide **reverse engineering** process. We recreate an object from the result of 3D Scan. The result of reverse engineering help our customer to develop their products or can be used as a digital data documentation.



3D
↗
2D



Our service covers

➔ 3D Scanning

➔ Reverse Engineering

Send us your part for **3D scanning evaluation!**